

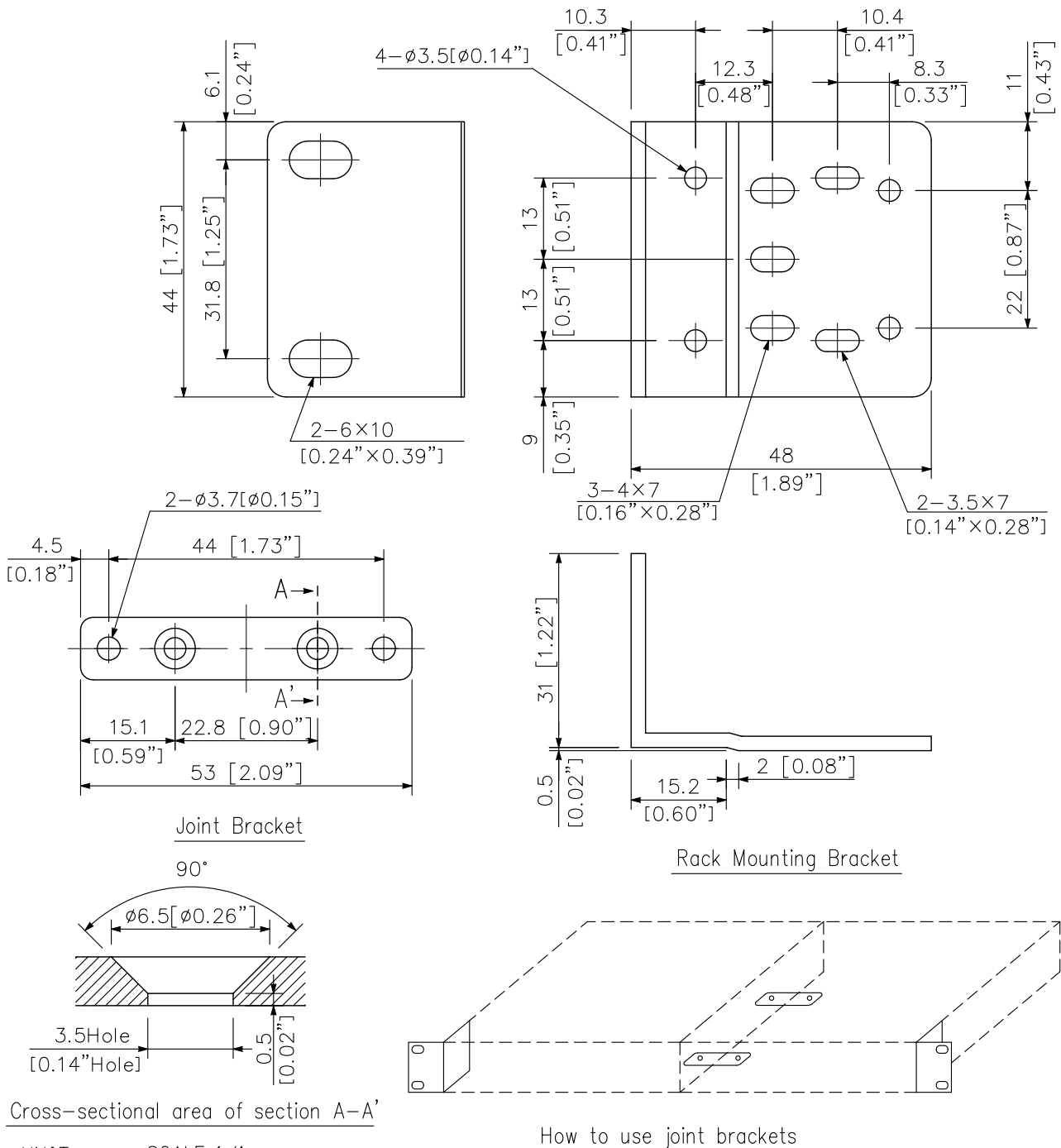
### DESCRIPTION

The MB-15B-J is used for side-by-side connection of two one-unit size components that are 210 mm (8.27") in width in a component rack.

### SPECIFICATIONS

Finish	Black
Weight	0.12 kg (0.26 lb)
Set Composition	Mounting bracket.....2, Joint bracket.....2
Accessories	Binding head Taptite screw (B tight 3×14) .....8 Binding head Taptite screw (B tight 3×8).....6 Binding head screw (M3×12) .....6 Oval head screw (M3×6) .....4 Binding head Taptite screw (S tight 5×12) .....4 Fiber washer (5.2×10.5×t1.0) .....4

### APPEARANCE



Cross-sectional area of section A-A'

UNIT:mm SCALE:1/1

How to use joint brackets